



life in full color

HOTLINE

19852 |  sipesegypt

Address: 104 | Al Thawra st. | Heliopolis | Cairo | Egypt

Tel.: +2 02 - 26905015 Fax: +2 02 -2 690 50 18

website: www.sipes.net

Email: info@sipes.net



life in full color



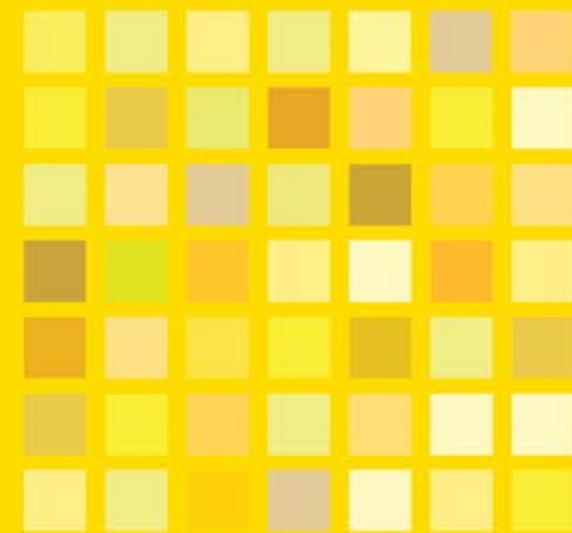
COLOR INSPIRATIONS

How to use Yellow?

Yellow color exudes warmth and it brings cheer in the rooms. It is suitable for places which get less sunshine. It brightens up the room.

Yellow Energy

Yellow activates memory, has a positive impact, enhancing communication, creativity, intuition and independence.



Shades of Yellow?

| | | | | | | | | | |
|-----------------------|-----------------------|-------------------|------------------------|-------------------|--------------------|------------------------|--------------------|----------------------|-----------------------|
| Lemon Tart F176 | Curiosity F177 | Ecru Silk Y007 | Dancing Feet F004 | Breakfast D136 | Mimosa D137 | Daybreak D001 | Open Door D003 | Quiet Start Y107 | Lime Juice Y101 |
| Classic Ivory Y106 | Terrace Tiles D005 | Halo Y003 | Sunflower Girl F003 | Awaken D002 | Tambourine Y110 | Imperial Topaz F010 | Rice Grain Y102 | Dakhla Beach Y014 | Duchess Satin Y009 |

برجاء مراعاة ان الالوان الموجودة في الكتالوج تختلف باختلاف بسيط عن الالوان الموجودة في كارتلة الالوان



Yellow HARMONIES



Yellow CONTRASTS



How to use Orange?

Orange color is a warm color and it up lifts the mood. It brings cheer in the rooms. It is suitable for places which get less sunshine. It brightens up the room.

Orange Energy

Orange Can stimulate feelings relating to summer. It is related to meditation, higher self and creativity.



Shades of Orange?

| | | | | | | | | | |
|--------------------|-------------------------|-----------------------|-------------------------|-----------------------|---------------------|----------------------|-----------------------|------------------------|----------------------|
| Sunset Sea Y025 | Courtyard House D014 | Warm Wood D020 | Amber D018 | Golden Raisin D019 | Amber Light F013 | Daredevil F024 | Fallen Leaves F014 | Imperial Topaz F010 | Golden Syrup F019 |
| Bold Red F053 | Chinatown F042 | Sartorial Red F049 | Sundried Orange F029 | Fashionista F048 | Follow Me F035 | Passionfruit F028 | Basket Weave D024 | Pagoda Heights F045 | Village Life D015 |

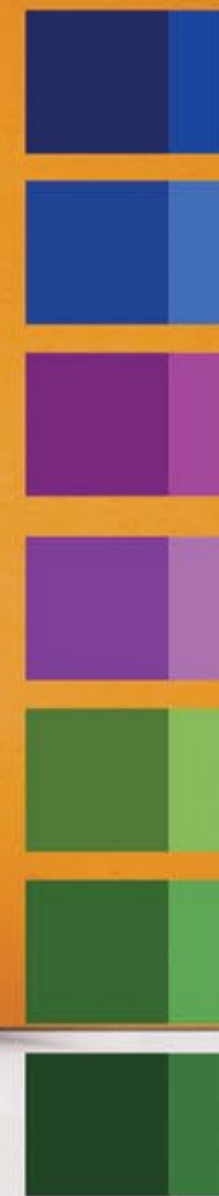
برجاء مراعاة ان الالوان الموجودة في الكتالوج تختلف باختلاف بسيط عن الالوان الموجودة في كارتلة الالوان



Orange HARMONIES



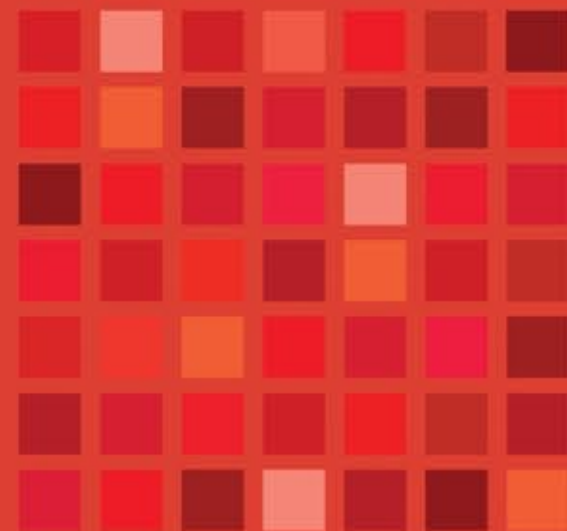
Orange CONTRASTS



How to use Red?

For interior design, red is often an extremely popular choice, enhancing self-motivation, generosity and leadership.

It increases enthusiasm, stimulates energy, passion and strong emotions and encourages action, confidence and appetite.



Shades of Red?

| | | | | | | | | | |
|--------------------------|------------------------|-------------------------|----------------------|-----------------------|-----------------------|-----------------------|----------------------|--------------------|-----------------------|
| Oriental Lacquer W109 | Moulin Rouge E049 | Chinatown F042 | Flirty Flair F047 | Kermes Red F062 | Forever yours F056 | Shemagh Scarf F063 | Bold Red F053 | Temptation F073 | Lustrous Pink F077 |
| Velvet Touch E039 | Lacquered Bowl F044 | Legendary Charm F075 | Red Jasper F064 | Sartorial Red F049 | Alizarin Lake F065 | Kermes Red F062 | Sugared Rose F066 | Layla F072 | Red Velvet F079 |





Red HARMONIES



RED CONTRASTS

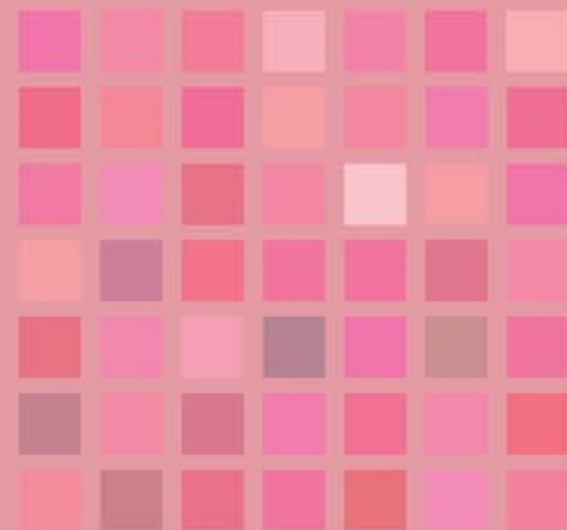


How to use PINK?

Pink is the color of universal love. Pink is a quiet color. A pink means "I will never forget you".

Pink Energy

Pink is determined by how much red is present. White is the potential for fullness, while red helps you to achieve that potential. Pink combines these energies. Shades of deep pink, are effective in neutralizing disorder and violence. Pink provides feelings of caring, tenderness, self-worth, relaxation, love & acceptance.



Shades of Pink?

| | | | | | | | | | |
|-----------------------|------------------------|--------------------------|------------------------|----------------------|------------------------|-------------------------|-----------------------|------------------------|---------------------|
| Nursery Rhyme D066 | Rose Bud D068 | Sweet Dreams D067 | Play Date D062 | Pink Rosette D063 | Tea Roses D058 | Creamy Cupcakes D057 | Delicate Pink D051 | Rose Quartz Y055 | True Story Y065 |
| Afsana W126 | Invite in Pink E041 | Love and Longing F076 | Ballerina Pink F081 | Map of Love F087 | Playful Puppet F092 | Tickle Me Pink F091 | Pink Giggle F086 | Pink Champagne Y045 | Marshmallow Y063 |



Pink HARMONIES

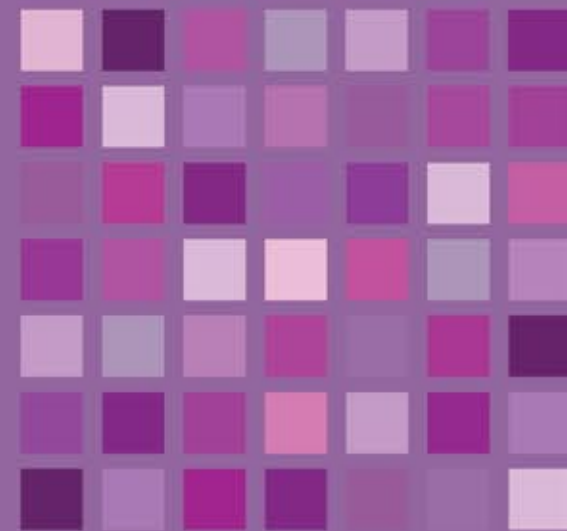


Pink CONTRASTS



How to use Purple?

is a royal color and when used properly, can produce a breathtaking interior design feel. This is also the color of inspiration and artistry, so if you are an artist, a room with purple accents might stimulate your mind. This color is also believed to help kids develop imagination and transformation, and because of this, it is often used for the interior design of children's rooms.



Shades of Purple?

| | | | | | | | | | |
|----------------------|----------------------|------------------------|------------------------|----------------------|---------------------|-------------------------|-------------------------|-----------------------|-----------------------|
| True Story Y065 | Dreamland D070 | Scent of Lilac D076 | Purple Tassles D079 | Purple Robe D080 | Reception D078 | Oil of lavender D084 | Lavender Fields D085 | Endless Night W125 | Restful Night W134 |
| Mauve Damask D075 | Evening Date F108 | Secret Desire W149 | Mystic Purple W150 | Iris Corsage E051 | Moody Mauve E052 | Nubian Vault F104 | Purple Twilight F109 | Long Night F105 | Mount Royal E059 |



Purple HARMONIES

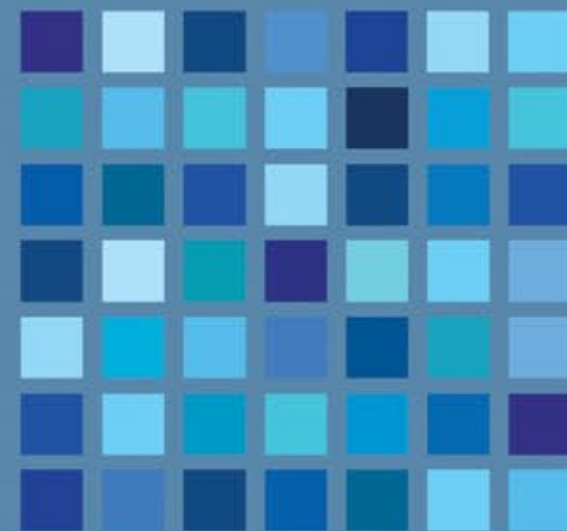


Purple CONTRASTS



How to use **Blue**?

Blue is the most common color used in interior design - it relaxes and refreshes, it provides for a feeling of safety, clear thinking, diligence and organization. If you choose blue for your home, you cannot go wrong. But blue is a cold color, so balance it with warm or neutral colors.



Shades of Blue?

| | | | | | | | | | |
|-----------------------|------------------|---------------------|-------------------|------------------------|---------------------|---------------------|------------------------|-------------------|------------------------|
| Peace of mind Y074 | Blue Day D097 | Dyed Indigo W160 | Blue Nile W169 | Moorish Tile W179 | Secret Blue E060 | Silent Bell M084 | Sailors Song E062 | Sea Port E068 | Secret Desire W149 |
| Flax Flowers D093 | Long Bay F127 | Aruba Blue F124 | Blue Dock F120 | Straights Blue F118 | Twin Lakes F131 | Reef Waters F133 | Gathering Tide D103 | True Blue D098 | Water Fountain D092 |



Blue HARMONIES



Blue CONTRASTS

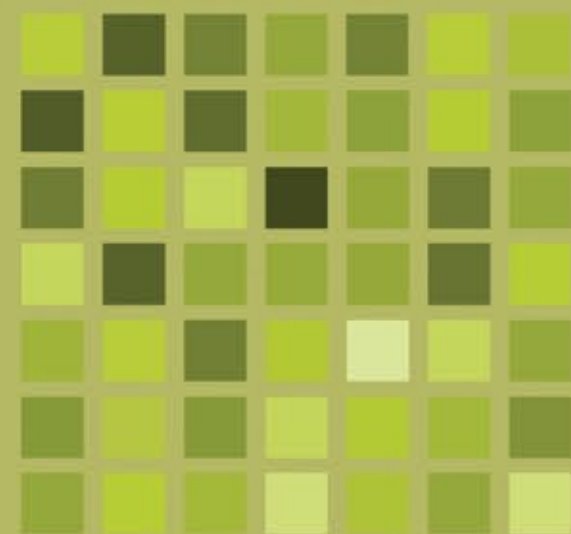


How to use Green?

Green is the color of nature. It relaxes and inspires. This color helps transferring clear perception, compassion and self-recognition. Sometimes it adds a nice change of space for smaller rooms.

Green Energy

Green helps alleviate depression & nervousness. Offers a deep sense of renewal & self-control.



Shades of Green?

| | | | | | | | | | |
|---------------------|----------------------|------------------------|-----------------------|-----------------------|-------------------------|---------------------|------------------------|--------------------------|---------------------|
| Tea Tree D124 | Celadon Bowl Y095 | Icy Glace D121 | Patina W197 | Great Gate W200 | Moss on Wall W205 | Oasis Pool W209 | Still Water W203 | Pharohs Ornament W219 | Bejeweled F148 |
| Ocean Depth F140 | Wonderland F137 | Viridian Green F144 | Stained Glass F145 | Nephrite Ring F150 | Tranquil Willow F154 | Early Bloom F157 | After the Rain F156 | Mint Garden W207 | Al Bahariya W228 |





How to use Brown?

The color brown brings warmth and is natural and supportive. It helps developing a mood of seriousness and is a very solid color.

Many people find it reliable as it gives a feel of emotional safety and material security. This color signifies quality and is often used in places which need to show a comfort and a loyal companionship. Psychologists believe that this color is practical, sensible and wholesome. There are some shades of brown which show sophistication and elegance, hence strongly giving out a feel of reassurance.



Shades of Brown?

| | | | | | | | | | |
|------------------------|----------------------|---------------------|-----------------------|-------------------|-----------------------|--------------------|------------------------|--------------------|-----------------------------|
| Shokolata M067 | Brick Kiln M061 | Megalith W025 | Caramel Glaze M066 | Talisman M065 | Mezze Platter M068 | Cocoa Love M070 | Always Neutral W047 | Zen Garden W022 | Halo Y003 |
| Painters White W011 | Damask Sheen W041 | Baked Earth W070 | Rare Earth W044 | Moonscape Y004 | Bound Book W040 | Ecru Silk Y007 | Naturally Calm W037 | Qsar W069 | Mansion of the Moon E011 |



Brown HARMONIES

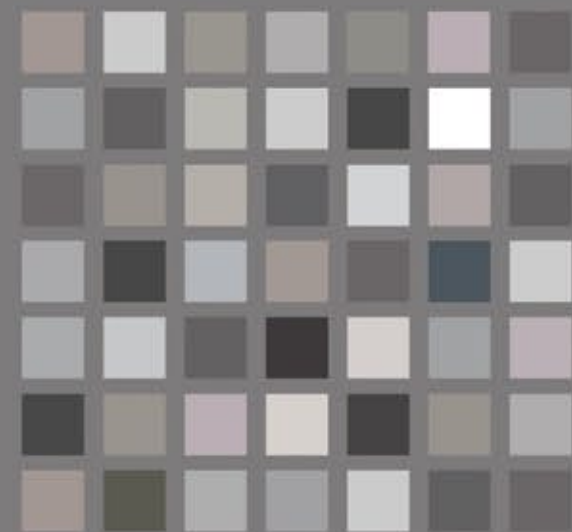


Brown CONTRASTS



How to use Gray?

Gray is a neutral color, very elegant for interior design as it represents protection, peace and loyalty and individualism. It is very popular for prestige, simplicity and modernism. Gray is used for highlighting a certain area or a point in a room. It adds a sleek, cool look and enhances the overall calm effect of the ambiance.



Shades of Gray?

| | | | | | | | | | |
|----------------------|-----------------------|-------------------|----------------------------|------------------------|------------------------|----------------------|-----------------------|----------------------|-----------------------|
| Miles away M044 | Concrete Matt M041 | High Rise M042 | Sister of the Moon A027 | Vertical limit M043 | Ethereal Night A045 | Zenith Bound M040 | Touch of Gray W141 | Galactic M039 | Crystal Facet A034 |
| Family Crest A035 | Silent Stroll A030 | Star Dust M038 | Charcoal Sketch M004 | Wet Wind W172 | Secret Space M034 | Moons Orbit M037 | Remote Star A037 | Family Crest A035 | Stray Light A043 |



Gray HARMONIES



Gray CONTRASTS

